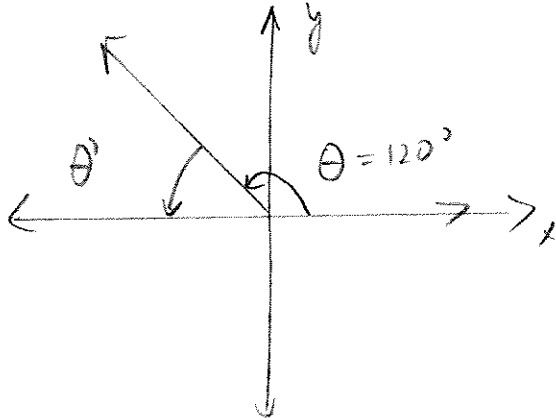


PC11

Reference Angles and Angles in Standard Position Practice

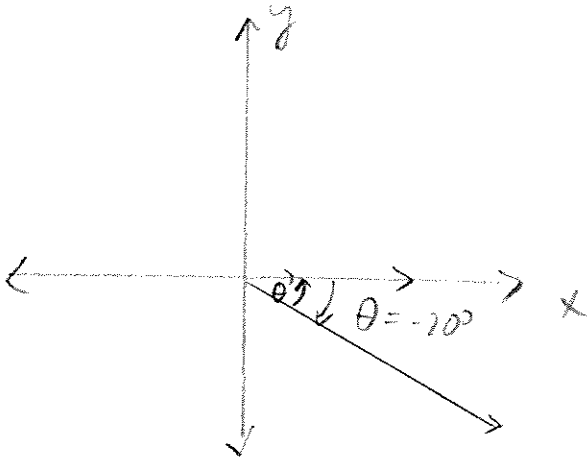
1. A) Sketch a labeled diagram of angle $\theta = 120^\circ$ in standard position.



- B) Using appropriate notation, clearly indicate the reference angle of θ .
C) Calculate the angle measure of the reference angle.

$$\theta' = 180^\circ - 120^\circ = \underline{\underline{60^\circ}}$$

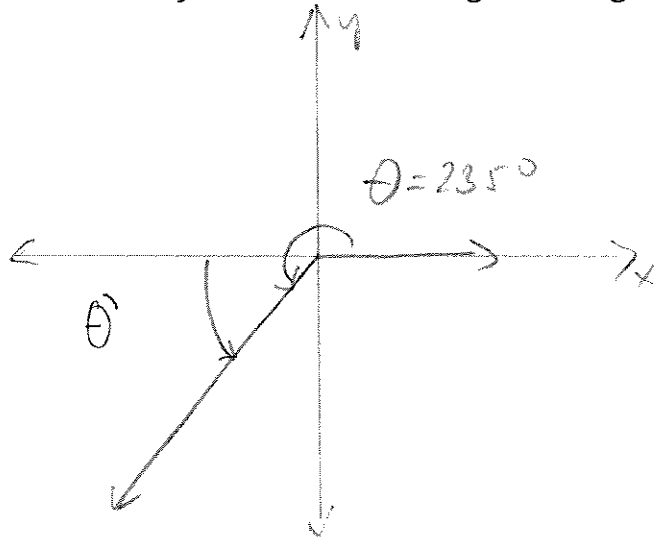
2. A) Sketch a labeled diagram of angle $\theta = -20^\circ$ in standard position.



- B) Using appropriate notation, clearly indicate the reference angle of θ .
C) Calculate the angle measure of the reference angle.

$$\theta' = 20^\circ$$

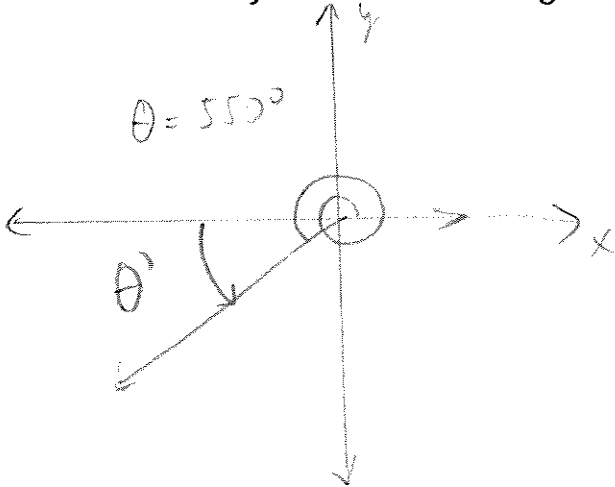
3. A) Sketch a labeled diagram of angle $\theta = 235^\circ$ in standard position.



$$\begin{aligned}\theta' &= \theta - 180^\circ \\ &= 235^\circ - 180^\circ \\ &= \underline{\underline{55^\circ}}\end{aligned}$$

- B) Using appropriate notation, clearly indicate the reference angle of θ .
C) Calculate the angle measure of the reference angle.

4. A) Sketch a labeled diagram of angle $\theta = 550^\circ$ in standard position.



$$\begin{aligned}\theta' &= 550^\circ - 360^\circ - 180^\circ \\ &= \underline{\underline{10^\circ}}\end{aligned}$$

- B) Using appropriate notation, clearly indicate the reference angle of θ .
C) Calculate the angle measure of the reference angle.