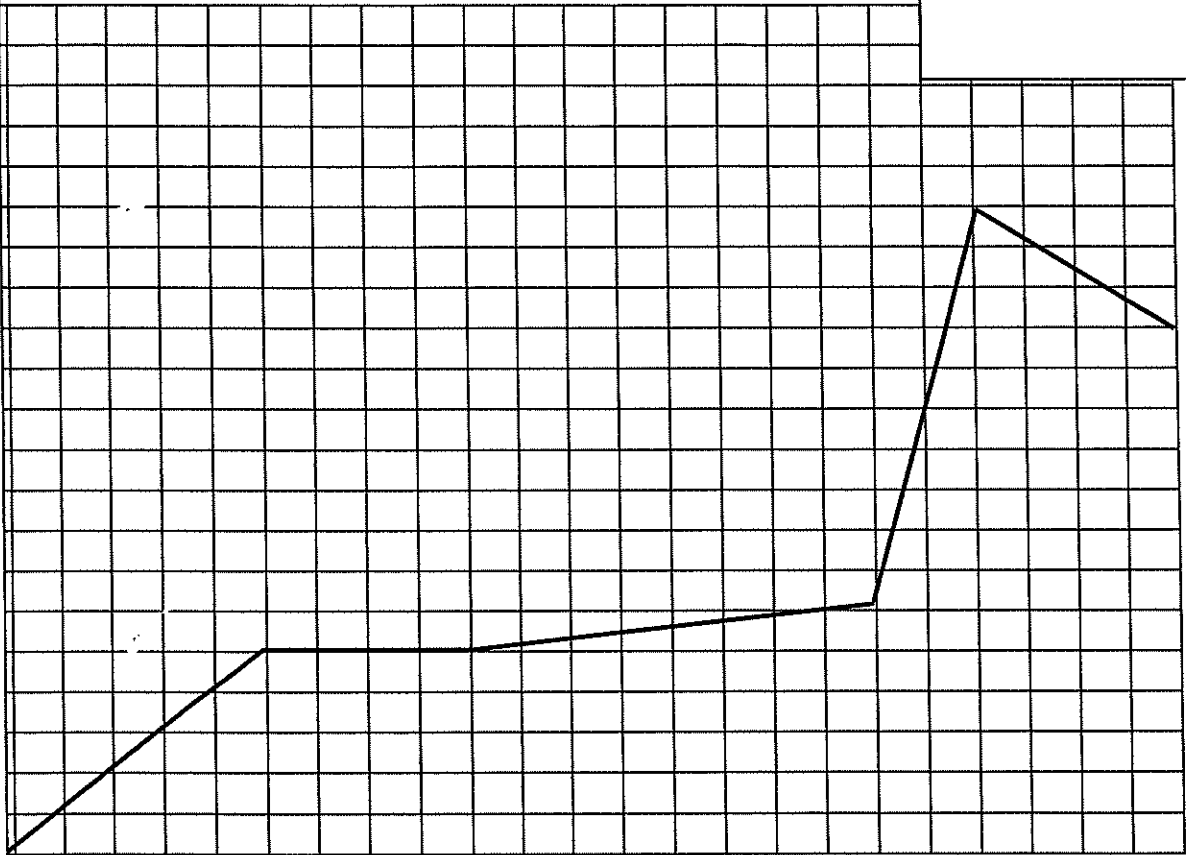


DETERMINING INSTANTANEOUS AND AVERAGE VELOCITY USING A GRAPH

Title:

Scale:



Determine the following:

Length of the time interval	
Time interval when the object is at rest	
Average velocity for the first 4 seconds	
Average velocity for the entire time interval	
Instantaneous velocity for t=12 s	
Instantaneous velocity for t=2 s	
Instantaneous velocity for t= 20s	
Is the motion uniform or non-uniform?	
Change in displacement	